

Net Zero Impact & Sustainability Initiatives

Hariprasad Hegde
Global Head - Operations, Wipro Limited



Net Zero Impact – Asking Ourselves?

Is there a broad definition and approach for Net Zero Impact?

Does NZI mean Net Zero Energy Buildings?

How do you define the base upon which the impact is captured?

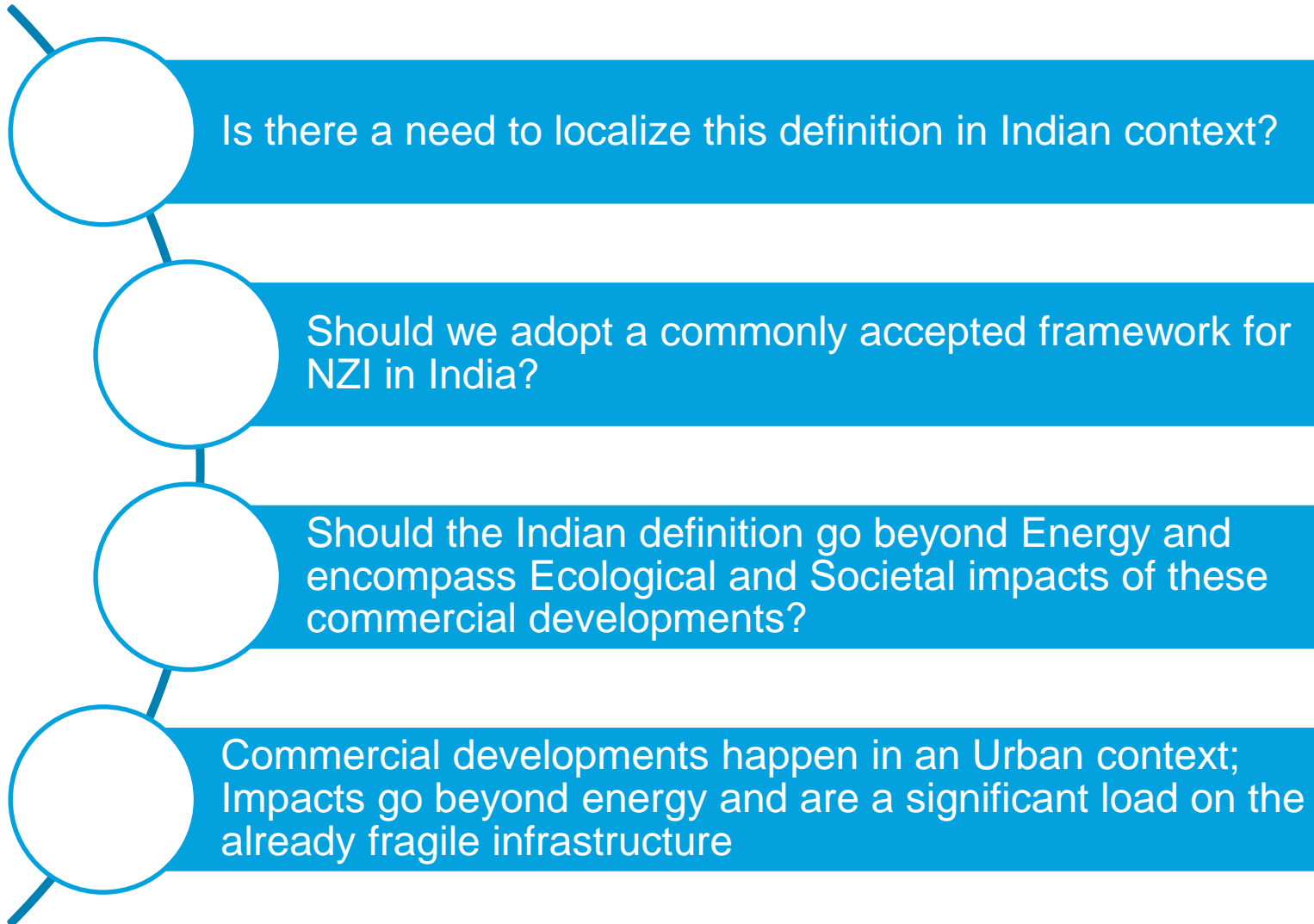


Are we discounting important elements in our definition of NZI?

Does it mean different things to different geos?

U.S Department of Energy itself classifies NZEBs into four categories

Net Zero Impact – Indian Context



Wipro – A Leader In Sustainability

- 19 facilities Green Certified
- 5 buildings awaiting Certification

- Green built-up area – 5.7 million SFT
- 38% of overall built-up area Green certified



100%
Desktops
energy Star 5
certified



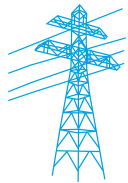
19
LEED rated
facilities



17
E-waste
collection centres



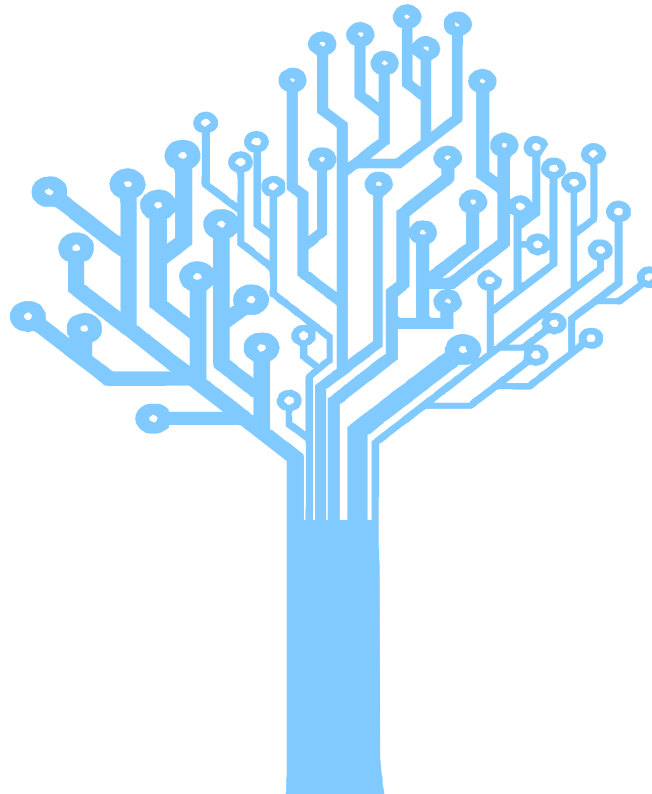
83%
Waste
recycled



30%
Reduction in
electricity
consumption
intensity over last 5
years

A+

Externally Rated
Sustainability Reports



32%
Water
recycled

20,000KL 

Rainwater harvested

Sustainability at Wipro

Businesses will have to rapidly redesign value chains to increase efficiency / reduce consumption and dependence on 'constrained resources'



32% of the total water consumed in 19 of our major locations is recycled using sewage treatment plants for landscaping and sanitation



Biodiversity programs launched at two large campuses to convert them into biodiversity zones



20,000 KL of rainwater is harvested in our campuses. 25% of this is used within the facility and 75% is recharged to the ground

Wipro Sustainability | Recognitions

Carbon Disclosure Project – Disclosing for last 5 years and are part of the Carbon Disclosure Leadership Index (CDLI) 2012– comprising 51 companies from across the World and the only one based in India

Dow Jones Sustainability Index 2012 - Third year in a row and are the world sector leader in 'Computer Services and Internet)

Greenpeace Cool IT Leaderboard 2012– in the Global Top 10 for the second consecutive year

OeKoM Research - Sustainability rating of B Prime – and placed globally at No 2 in the industry sector

Ethisphere Institute – placed us in the 2012 list of Worlds Most Ethical Companies

Carbon Disclosure
Project



**Dow Jones
Sustainability Indexes**
Member 2012/13

**COOL IT
LEADERBOARD**

oekom r|e|s|e|a|r|c|h

Approach to Net Zero – Expanding the Envelop

Green Cover



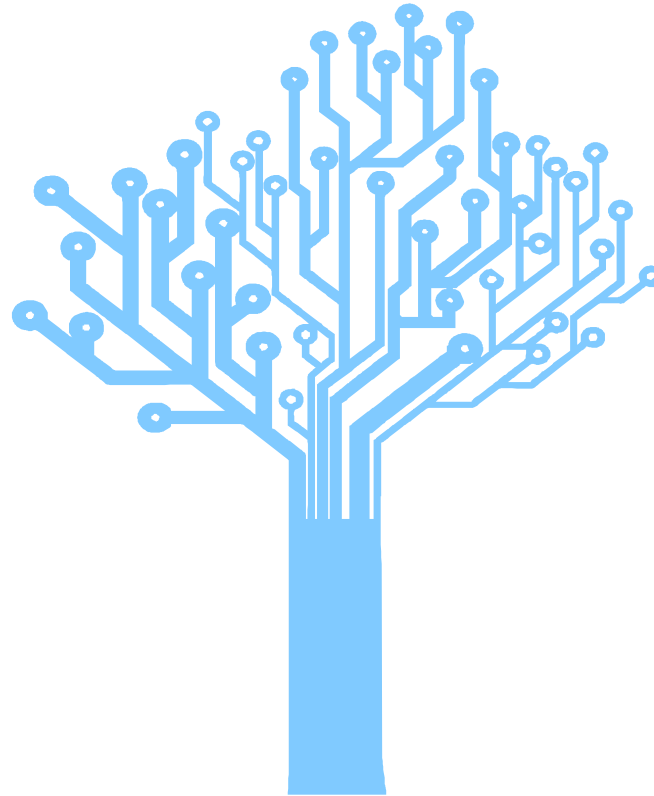
Mobility



Social Equity



Waste



Bio Diversity



Energy



Water

Much needs to be done in terms of our Obligation to creating a 'Just, Equitable and Socially and Ecologically sustainable' society.

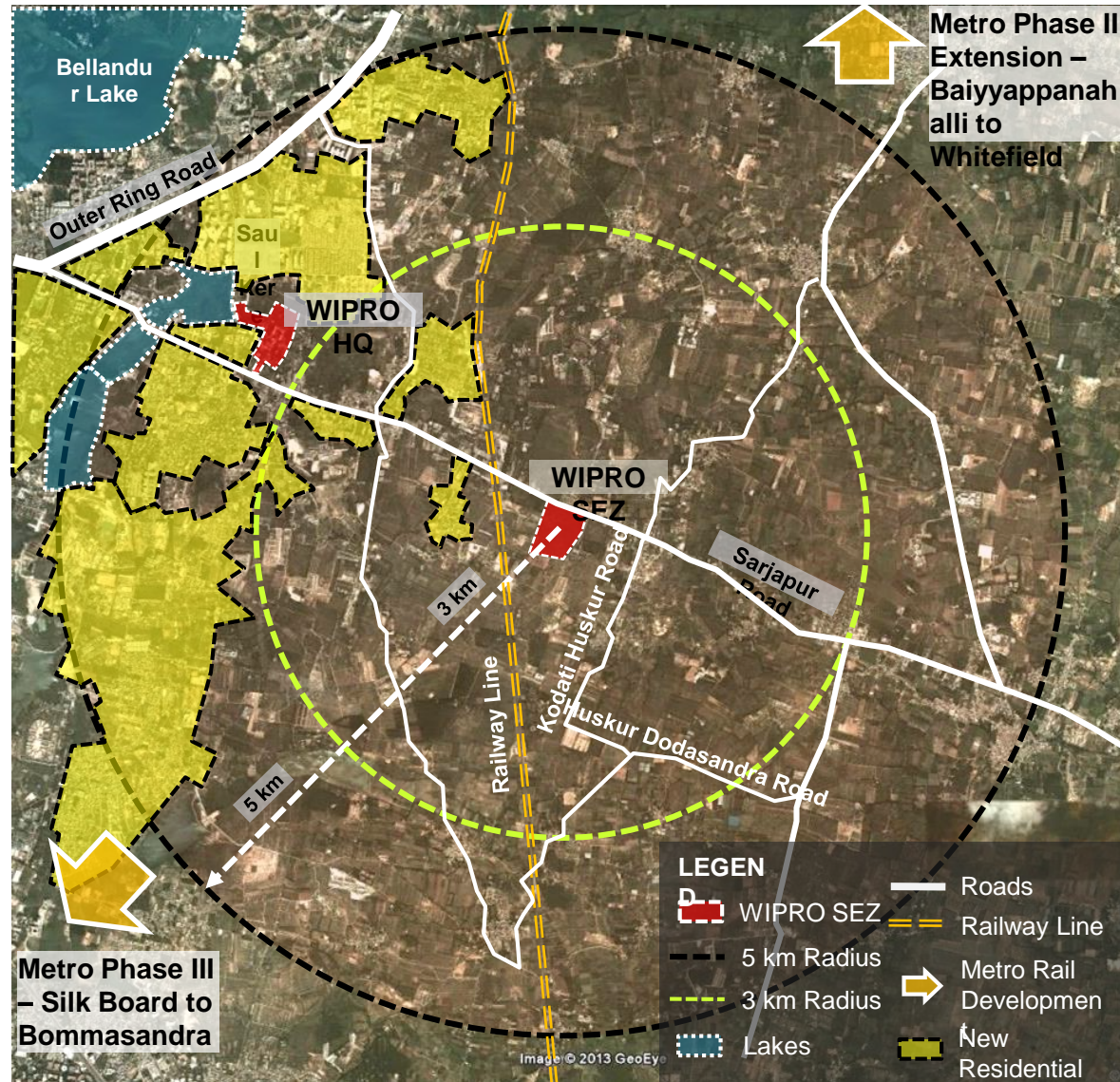
Solar Roof top Project



- 5.7 MW Project
- Most likely the **largest** roof top solar in the country
- Number of buildings considered – **91**
- Number of locations – **17**
- Number of states- **8**

This in addition to our plan to move RE procurement to ~ 50% in the next 12 months.

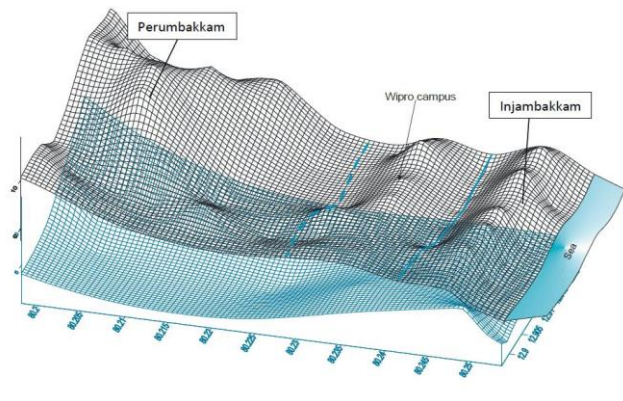
Consultative Urban Planning to create a sustainable zone



Kodathi, Bangalore

- Area: 50 Acres
- Potential: 6.5Mn Sq. ft.
- Planned term: 2012 - 2016

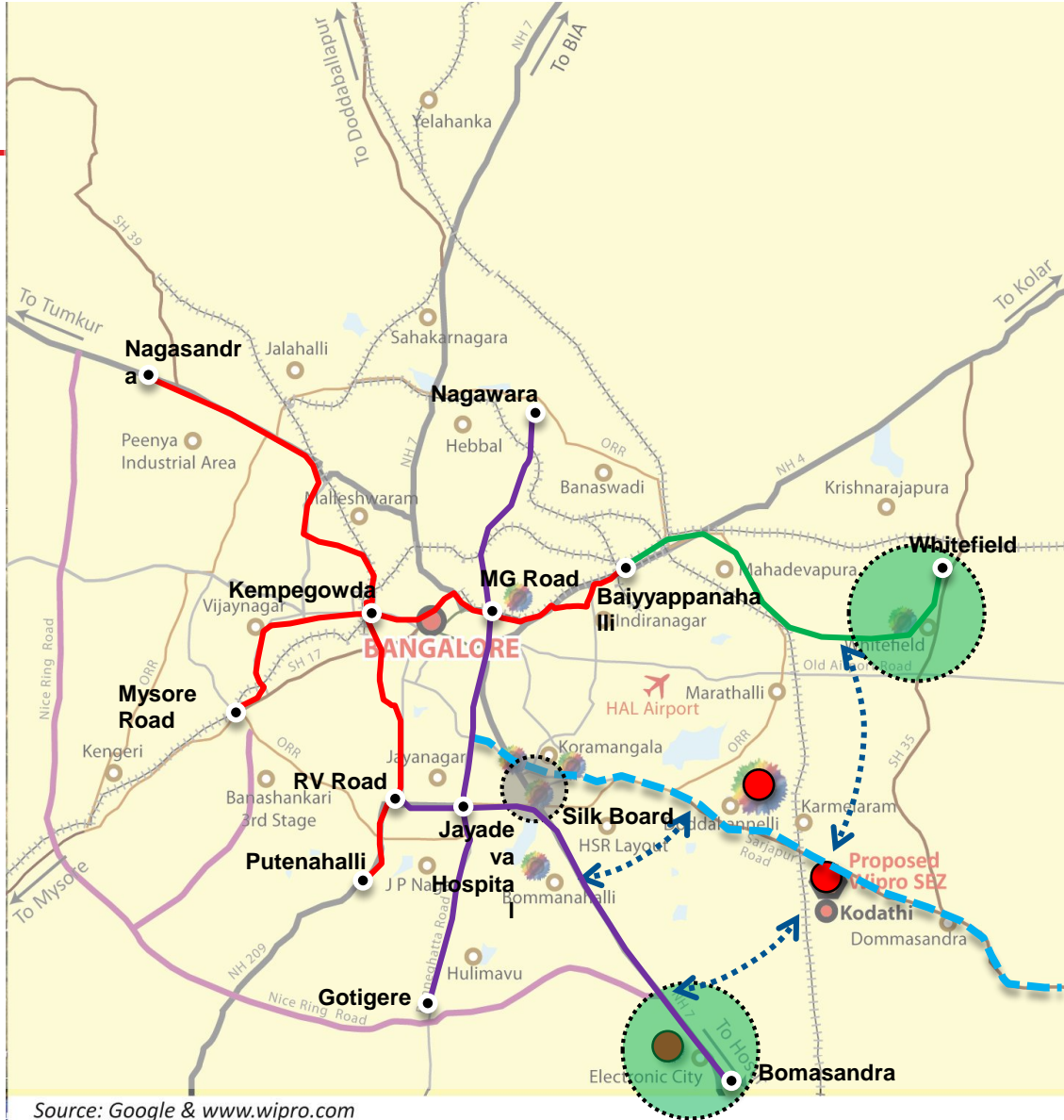
Responsible Use of Water



- Wipro- BIOME study to understand water trail in and around Bangalore and Chennai campuses
- Target to achieve Water self-sufficiency – Net fresh water consumption to be under **25%**

Sustainable Urban Mobility

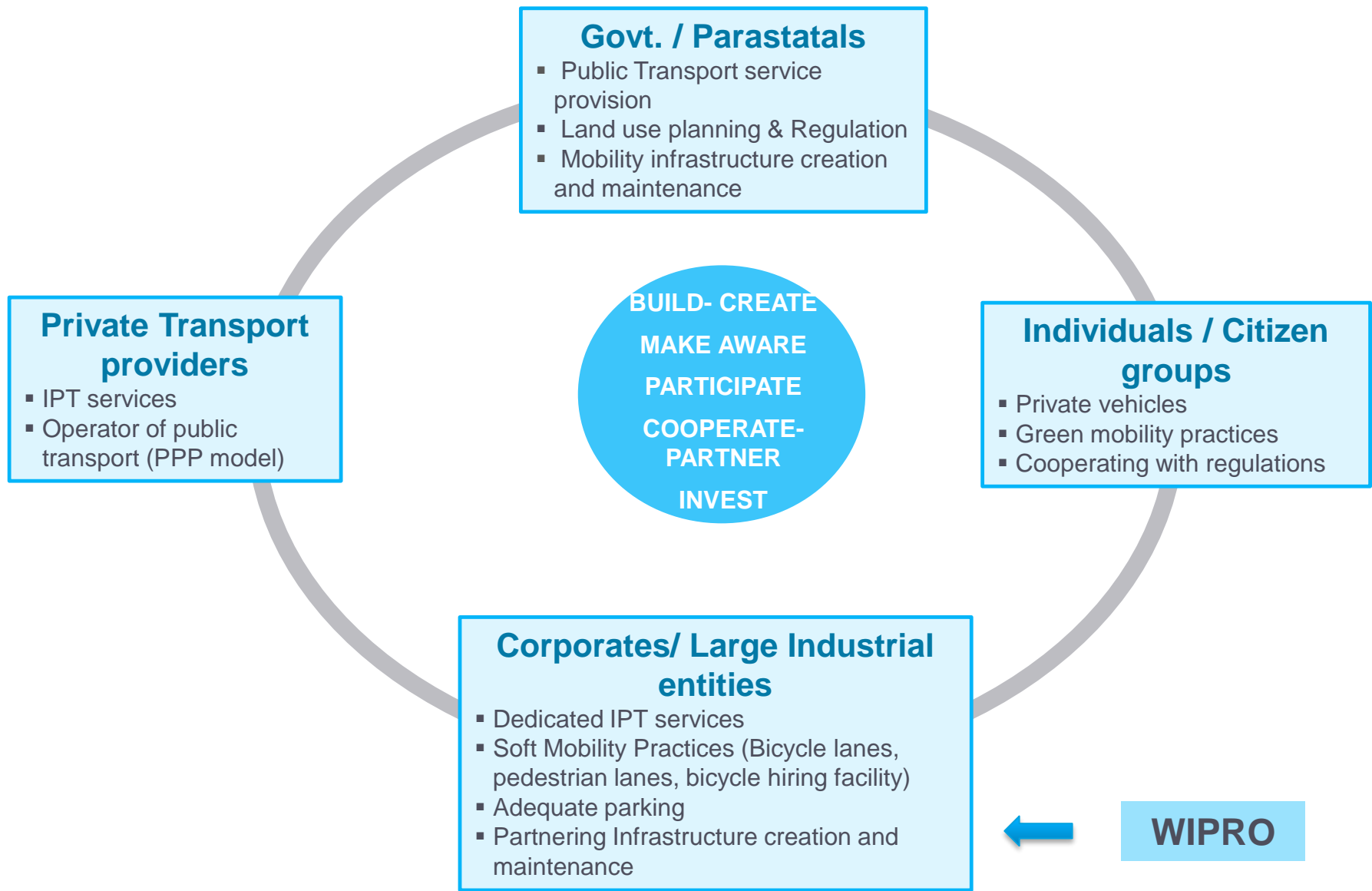
- The project will put together an internal application in collaboration with the 'Core Service Provider' that will help 15000+ Wipro employees use public transport conveniently to commute to work (EC & SJP)



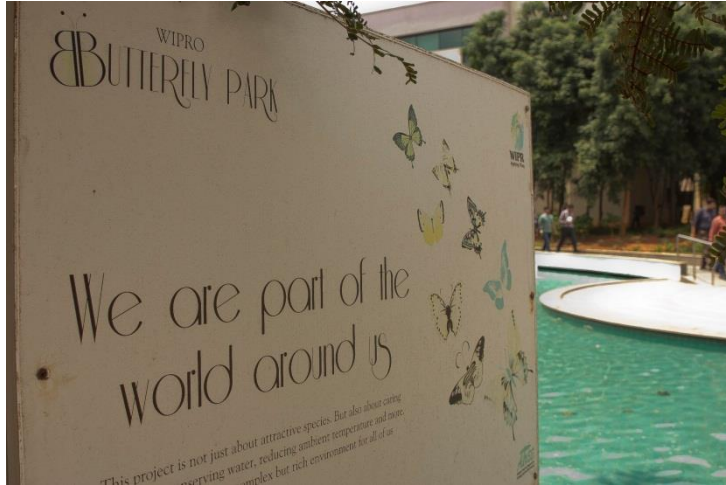
Source: Google & www.wipro.com



Sustainable Urban Mobility: Multiple Stakeholders Towards A Common Goal



Bio Diversity Zones



Ongoing Projects

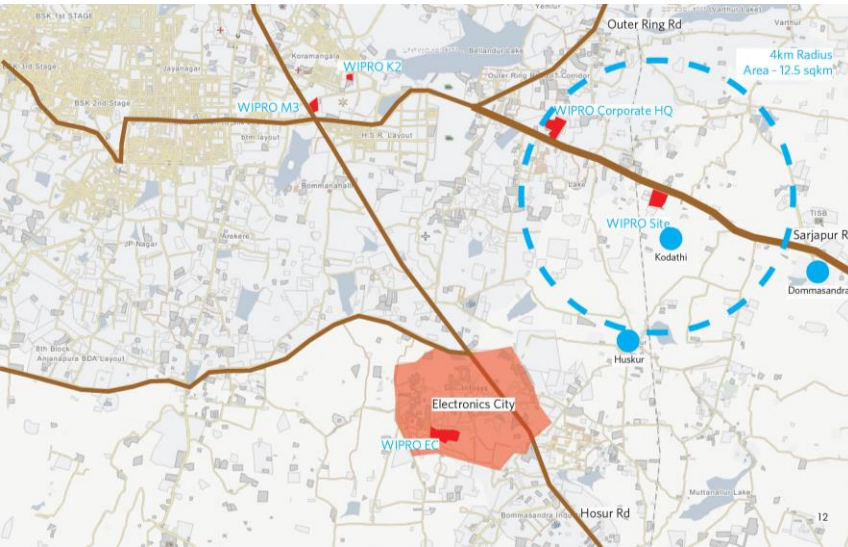
Solar Roof top Project



- **5.7 MW Project**
- Most likely the **largest** roof top solar in the country
- Number of buildings considered – **91**
- Number of locations – **17**
- Number of states- **8**

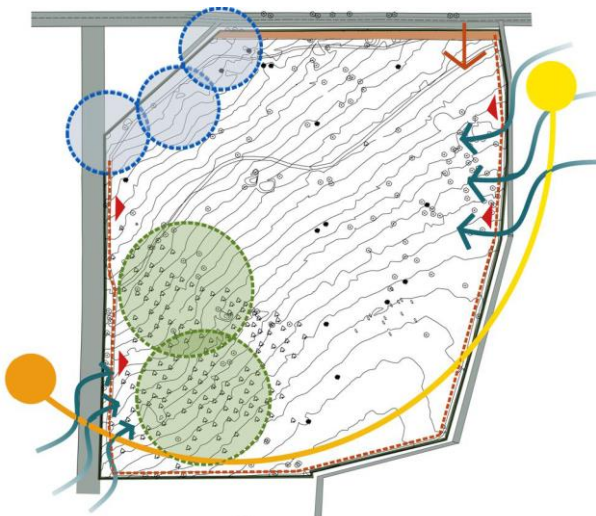
Ongoing Projects

Consultative Planning to create a Sustainable Urban zone



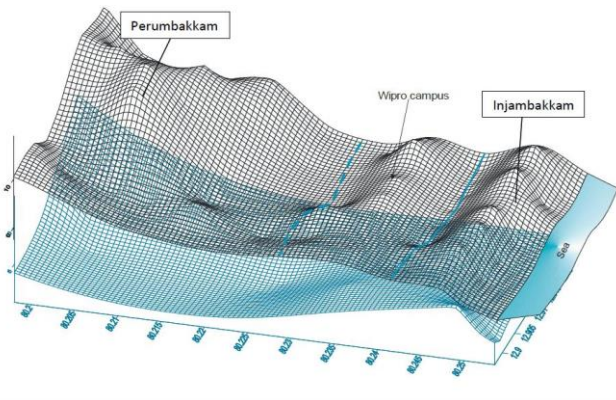
Kodathi, Bangalore

- Area: 50 Acres
- Overall Potential: 6.5Mn Sq. ft.
- Planned term: 2012 - 2016



Ongoing Projects

Responsible Use of Water



- Wipro- BIOME study to understand water trial inside Bangalore and Chennai campuses
- Target to achieve Water self-sufficiency – Net fresh water consumption to be under **25%**

Ongoing Projects

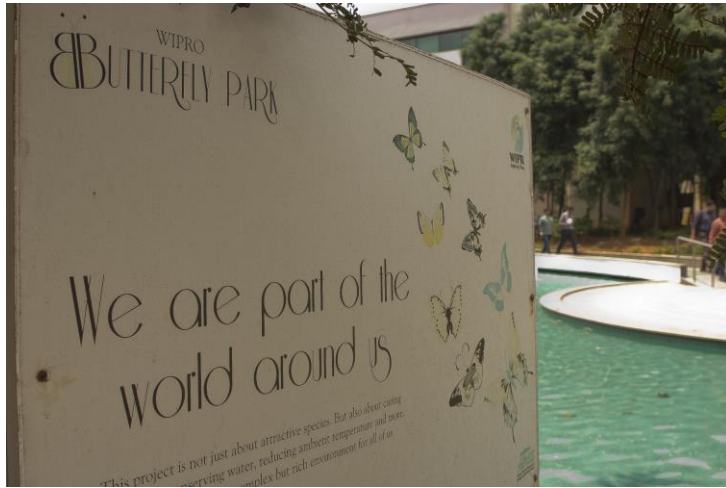
Mobility Project

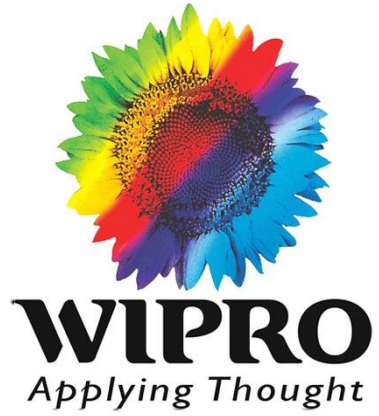


- The project will put together an internal application in collaboration with BMTC that will help +15000 Wipro employees use public transport conveniently to commute to work (EC & SJP)
- The application will allow our employees to upload their residence information and provide feedback to BMTC
- BMTC will use this information to deploy point to point bus service

Ongoing Projects

Bio Diversity





Thank you

